



# JOIN THE NIKE CLUB

## NIKE CLUB FLEECE SLEEVE SWOOSH STYLES

Built with versatility in mind, this brushed-back fleece is perfect for work or play. Cozy and warm, it is obvious why Club Fleece is Nike's bestselling fleece. Design details include rib knit cuffs and hem. A contrast Swoosh logo is embroidered on left sleeve. Made of 8.2-ounce, 80/20 cotton/polyester.

### A. PULLOVER HOODIE

#### NKDR1499

- Jersey-lined, three-panel hood with dyed-to-match drawcords
- Front pouch pocket

ADULT SIZES: XS-4XL

### B. WOMEN'S PULLOVER HOODIE

#### NKFD9889

- Made of 8.3-ounce, 80/20 cotton/polyester
- Three-panel hood with dyed-to-match drawcords
- Front pouch pocket

WOMEN'S SIZES: S-2XL

### C. CREW

#### NKFD9863

- Made of 8.3-ounce, 80/20 cotton/polyester
- Rib knit collar

ADULT SIZES: XS-4XL

### D. FULL-ZIP HOODIE

#### NKDR1513

- Jersey-lined, three-panel hood with dyed-to-match drawcords and zipper (Charcoal Heather has anthracite drawcords and zipper)
- Front pockets

ADULT SIZES: XS-4XL

### E. WOMEN'S FULL-ZIP HOODIE

#### NKFD9890

- Made of 8.3-ounce, 80/20 cotton/polyester
- Three-panel hood with dyed-to-match drawcords and dyed-to-match zipper
- Front pockets

WOMEN'S SIZES: S-2XL

### NEW!

### F. 1/2-ZIP

#### NKDX6718

- Made of 8.3-ounce, 80/20 cotton/polyester
- Dyed-to-match zipper
- Side pockets

ADULT SIZES: XS-4XL

### G. WOMEN'S 1/2-ZIP

#### NKDX6720

- Made of 8.3-ounce, 80/20 cotton/polyester
- Dyed-to-match zipper
- Front pouch pocket

WOMEN'S SIZES: S-2XL

## NIKE CLUB FLEECE CHEST SWOOSH STYLES (NOT SHOWN)

A contrast Swoosh logo is embroidered on left chest. Made of 8.2-ounce, 80/20 cotton/polyester.

### CLUB FLEECE PULLOVER HOODIE

#### CJ1611

ADULT SIZES: S-4XL

### CLUB FLEECE CREW

#### CJ1614

ADULT SIZES: S-4XL







WHITE

CHARCOAL HEATHER  
(NKFD9890 & NKDR1513 ONLY)

LIGHT GAME ROYAL HEATHER  
(NKDX6718 & NKDX6720 ONLY)

DARK GREY HEATHER

UNIVERSITY RED  
NKDR1513, NKFD9890, NKDR1499 &  
NKFD9889 ONLY

DARK MAROON  
(CJ1611 ONLY)

GAME ROYAL  
(NKFD9889, NKDR1499, NKDX6718,  
NKDX6720, & NKFD9863 ONLY)

ROYAL  
(CJ1611 & CJ1614 ONLY)

MIDNIGHT NAVY  
(NOT AVAILABLE IN CJ1611 & CJ1614)

NAVY  
(CJ1611 & CJ1614 ONLY)

GORGE GREEN  
(NKFD9889 & NKDR1499 ONLY)

DARK GREEN  
(CJ1611 ONLY)

ANTHRACITE  
(NOT AVAILABLE IN NKDR1513 & NKFD9890)

BLACK





BLACK

ANTHRACITE

CHARCOAL  
HEATHER

NAVY

GAME  
ROYAL

WHITE

DARK GREY  
HEATHER





# THERMA-FIT HOODIES

## NEW!

### NIKE THERMA-FIT POCKET FLEECE HOODIES

These hoodies with a zippered left arm pocket bring the heat to your workout with Therma-FIT fabric. Therma-FIT helps manage your body's natural heat to keep warm in cold-weather conditions. The design includes a three-panel hood with black drawcords, self-fabric cuffs and hem. A contrast Swoosh logo is embroidered on left sleeve. A contrast Therma-FIT logo is embroidered on back hem. Made of 7.4-ounce Therma-FIT fabric with at least 50% recycled content

#### THERMA-FIT POCKET PULLOVER FLEECE HOODIE

NKFD9735

- Front pouch pocket

ADULT SIZES: XS-4XL

#### THERMA-FIT POCKET 1/4-ZIP FLEECE HOODIE

NKFD9742

- Dyed-to-match zipper
- Front pouch pocket

ADULT SIZES: XS-4XL

#### THERMA-FIT POCKET FULL-ZIP FLEECE HOODIE

NKFD9859

- Dyed-to-match zipper
- Front pockets

ADULT SIZES: XS-4XL











# DRI-FIT STRETCH FOR FULL MOTION

## NIKE DRI-FIT STRETCH 1/2-ZIP COVER-UPS

Built for the course, the gym or just around town, these cover-ups perform with comfortable stretch for uninhibited movement and Dri-FIT moisture management technology for exceptional cooling. The design includes a contrast collar and zipper, open cuffs and an open hem. The contrast Swoosh design trademark is embroidered on the upper left sleeve. Made of 7.6-ounce, 93/7 polyester/spandex Dri-FIT fabric.

### DRI-FIT STRETCH 1/2-ZIP COVER-UP 779795

ADULT SIZES: XS-4XL

### WOMEN'S DRI-FIT STRETCH 1/2-ZIP COVER-UP 779796

Tailored for a feminine fit. Thumbholes at cuffs for warmth and enhanced fit.

WOMEN'S SIZES: S-2XL

ADULT

BLACK/DARK GREY

DEEP ROYAL BLUE/BLACK

BLACK/DARK GREY/GYM RED

DARK GREY/COOL GREY/VOLT

WOMEN'S

BLACK/DARK GREY

DARK GREY/WHITE

WHITE/DARK GREY



# THE HARDEST WORKING T-SHIRTS AND SWEATSHIRTS



DESERT

BLUESTONE

CARBON HEATHER

BRITE LIME

CARHARTT® BROWN

LAKESHORE



BRITE ORANGE

NAVY

BLACK

HEATHER GREY

NORTH WOODS HEATHER



BLACK

CARBON HEATHER

NAVY

HEATHER GREY

BRITE ORANGE

BRITE LIME

## CARHARTT® WORKWEAR POCKET SHORT SLEEVE T-SHIRTS

### CTK87

- Durable 6.75-ounce, 100% cotton jersey knit
- 90/10 cotton/poly (Heather Grey)
- 60/40 cotton/poly (Other Heathers, Brite Lime, Brite Orange)
- Rib knit crewneck
- Tagless neck label
- Left chest pocket
- Side-seamed construction minimizes twisting
- Carhartt label sewn on left chest pocket
- Loose fit

ADULT SIZES: S-4XL

**TALL SIZES** LT-3XLT (CTTK87)

## WORKWEAR POCKET LONG SLEEVE T-SHIRT

### CTK126

- Rib knit cuffs

ADULT SIZES: S-4XL



## CARHARTT® MIDWEIGHT HOODED ZIP-FRONT SWEATSHIRT

### CTK122

- 10.5-ounce, 50/50 cotton/poly blend or 59/41 cotton/poly blend (Black, Carbon Heather, Moss, New Navy)\*
- 50/50 cotton/poly blend (Brite Lime, Brite Orange)
- 70/30 cotton/poly blend (Heather Grey)
- Attached three-piece hood with drawcord closure
- Full-length brass front zipper
- Two front hand warmer pockets
- Stretchable, spandex-reinforced, rib knit cuffs and waistband
- Carhartt-strong, triple-stitching on pocket
- Carhartt label sewn on left hand warmer pocket
- Loose fit

ADULT SIZES: S-4XL



HEATHER GREY

MOSS

NEW NAVY

CARBON HEATHER

BLACK

BRITE ORANGE

BRITE LIME

## CARHARTT® MIDWEIGHT HOODED SWEATSHIRTS

### CTK121

- 10.5-ounce, 50/50 cotton/poly blend or 59/41 cotton/poly blend (Black, Carbon Heather, Moss, New Navy)\*
- 50/50 cotton/poly blend (Brite Lime, Brite Orange)
- 70/30 cotton/poly blend (Heather Grey)
- Attached three-piece hood with drawcord closure
- Front hand warmer pocket
- Stretchable, spandex-reinforced, rib knit cuffs and waistband
- Carhartt-strong, triple-stitched main seams
- Carhartt label sewn on hand warmer pocket
- Loose fit

ADULT SIZES: S-4XL

**TALL SIZES** LT-3XLT (CTTK121)



MOSS

HEATHER GREY

NEW NAVY

CARBON HEATHER

BLACK

BRITE ORANGE  
(CTK121 ONLY)BRITE LIME  
(CTK121 ONLY)

## CARHARTT® RAIN DEFENDER® PAXTON HEAVYWEIGHT HOODED ZIP MOCK SWEATSHIRT

### CT100617

- 13-ounce, 75/25 cotton/poly blend or 55/45 cotton/poly blend with Rain Defender durable water-repellent finish (Black, New Navy)\*\*
- 55/45 cotton/poly blend (Carbon Heather)
- Attached jersey-lined three-piece hood with drawcord closure
- Mock neck collar with 8-inch antique-finish brass zipper
- Front hand warmer pocket with hidden security pocket inside
- Stretchable, spandex-reinforced, rib knit cuffs and waistband
- Carhartt label sewn on hand warmer pocket
- Loose fit

ADULT SIZES: S-4XL



BLACK

NEW NAVY

CARBON HEATHER

## CARHARTT® RAIN DEFENDER® PAXTON HEAVYWEIGHT HOODED SWEATSHIRT

### CT100615

- 13-ounce, 75/25 cotton/poly blend or 55/45 cotton/poly blend with Rain Defender durable water-repellent finish (Black, New Navy)\*\*
- 55/45 cotton/poly blend (Carbon Heather)
- Attached jersey-lined three-piece hood with drawcord closure
- Front hand warmer pocket with hidden security pocket inside
- Stretchable, spandex-reinforced, rib knit cuffs and waistband
- Carhartt label sewn on hand warmer pocket
- Loose fit

ADULT SIZES: S-4XL



CARBON HEATHER

BLACK

NEW NAVY

\*Select colors in Carhartt fleece are currently transitioning from a 50/50 cotton/poly blend to a 59/41 cotton/poly blend. Weight and fabric properties remain the same. Your order may contain a combination of both fabrics.

\*\*Select colors in Carhartt fleece are currently transitioning from a 75/25 cotton/poly blend to a 55/45 cotton/poly blend. Weight and fabric properties remain the same. Your order may contain a combination of both fabrics.

Carhartt reserves the right to prohibit the addition to any Carhartt product any mark, name, design or logo that does not meet the high standards of the brand. Unless for uniforming end use, Carhartt products may not be resold without embellishment. Please contact your sales representative for more information.



A man and a woman are posing against a light-colored, textured wall. The man, on the left, is wearing a green District Perfect Tri Fleece Pullover Hoodie and blue jeans. The woman, on the right, is wearing a tan District Perfect Tri Fleece Pullover Hoodie and denim shorts. Both hoodies have a kangaroo pocket and drawstrings. The man is looking directly at the camera, while the woman is looking slightly to the side.

**DISTRICT®**

**DISTRICT® PERFECT TRI®  
FLEECE PULLOVER HOODIE**

**DT1300**

- 7-ounce, 54/40/6 poly/combed ring spun cotton/rayon
- Self-fabric lined hood with twill back neck tape
- Dyed-to-match drawcords with metal tips
- Side seamed
- 2x1 rib knit cuffs and hem
- Tear-away label

ADULT SIZES: XS-4XL

**Boundary-pushing  
Perfect Tri *softness.***





**DISTRICT® PERFECT TRI® FLEECE CREWNECK SWEATSHIRT**

**DT1304**

- 7-ounce, 54/40/6 poly/combed ring spun cotton/rayon
- Raglan sleeves
- Side seamed
- 2x1 rib knit neck, cuffs and hem
- Tear-away label

ADULT SIZES: XS-4XL



**DISTRICT® PERFECT TRI® FLEECE FULL-ZIP HOODIE**

**DT1302**

- 7-ounce, 54/40/6 poly/combed ring spun cotton/rayon
- Self-fabric lined hood with twill back neck tape
- Dyed-to-match drawcords with metal tips
- YKK Metaluxe® zipper
- Side seamed
- 2x1 rib knit cuffs and hem
- Tear-away label

ADULT SIZES: XS-4XL



**DISTRICT® WOMEN'S PERFECT TRI® FLEECE 1/2-ZIP PULLOVER HOODIE**

**DT1311**

- 7-ounce, 54/40/6 poly/combed ring spun cotton/rayon
- Self-fabric lined hood with twill back neck tape
- Drop shoulder
- Modest crop length
- Dyed-to-match drawcords with metal tips
- YKK Metaluxe® zipper
- Side seamed
- 2x1 rib knit cuffs and hem
- Tear-away label

WOMEN'S SIZES: XS-4XL



**DISTRICT® PERFECT TRI® FLEECE JOGGERS**

- 7-ounce, 54/40/6 poly/combed ring spun cotton/rayon
- 2x1 rib knit waistband
- Dyed-to-match exterior drawcord with metal tips
- Side seam pockets
- 2x1 rib knit cuffs
- Side seamed
- Tear-away label

**PERFECT TRI® FLEECE JOGGER DT1307**

- Right patch pocket on back with rib knit trim

ADULT SIZES: XS-4XL

**WOMEN'S PERFECT TRI® FLEECE JOGGER DT1310**

WOMEN'S SIZES: XS-4XL

GREY FROST	BLUSH FROST (DT1300 ONLY)	HEATHERED EUCALYPTUS BLUE (DT1300 ONLY)	ROYAL FROST (DT1300, DT1311, DT1302, & DT1304 ONLY)	NAVY FROST (DT1300, DT1302, DT1304, DT1307 & DT1311 ONLY)	MILITARY GREEN FROST (DT1300, DT1302, DT1304, DT1307 & DT1311 ONLY)
HEATHERED CHARCOAL (DT1300, DT1302, DT1304 & DT1311 ONLY)	BLACK	OCHRE YELLOW HEATHER (DT1300 & DT1304 ONLY)	RED FROST (DT1300 & DT1304 ONLY)	DESERT TAN HEATHER (DT1300 & DT1304 ONLY)	DEEPEST GREY (DT1300, DT1302 & DT1304 ONLY)
WHITE (DT1300 & DT1304 ONLY)	NEW NAVY (DT1300, DT1302 & DT1304 ONLY)	DEEP ROYAL (DT1300 ONLY)			



**100% recycled fabric,  
never re-dyed.**



**DISTRICT® RE-FLEECE™**

- 8.1-ounce, 60% recycled cotton/40% recycled polyester
- 54% recycled cotton/40% recycled polyester/6% recycled rayon (Light Heather Grey)
- Side seamed
- Coverstitch details throughout
- Recycled, undyed tear-away label

**RE-FLEECE™ HOODIE  
DT8100**

- Recycled natural color twill back neck tape
- Recycled natural color drawcords
- 2x1 rib knit cuffs, pocket opening and hem

ADULT SIZES: XS-4XL

**RE-FLEECE™ FULL-ZIP HOODIE  
DT8102**

- Recycled natural color twill back neck tape
- Recycled natural color drawcords
- 2x1 rib knit cuffs, pocket opening and hem
- Metal YKK zipper with dyed-to-match zipper tape

ADULT SIZES: XS-4XL

*The production process infuses each garment with unique character. Please allow for slight color variation.*



District's **RE-FLEECE™** breathes new life into reclaimed materials. Affordable and comfortable, it's a fleece that feels good for you and our planet.

**WOMEN'S RE-FLEECE™  
FULL-ZIP HOODIE  
DT8103**

- Recycled natural color twill back neck tape
  - Recycled natural color drawcords
  - 2x1 rib knit side panels, cuffs, pocket opening and hem
  - Metal YKK zipper with dyed-to-match zipper tape
- WOMEN'S SIZES: XS-4XL



**WOMEN'S RE-FLEECE™  
HOODIE  
DT8101**

- Recycled natural color twill back neck tape
  - Recycled natural color drawcords
  - 2x1 rib knit side panels, cuffs, pocket opening and hem
- WOMEN'S SIZES: XS-4XL



**RE-FLEECE™ CREW  
DT8104**

- Recycled natural color twill back neck tape
  - 2x1 rib knit neck, cuffs and hem
- ADULT SIZES: XS-4XL

**RE-FLEECE™ JOGGER  
DT8107**

- 2x1 rib knit waistband and cuffs
  - Natural recycled exterior drawcord
- ADULT SIZES: XS-4XL

CHARCOAL HEATHER

BLACK

LIGHT HEATHER GREY  
(NOT AVAILABLE IN  
DT8107)

TRUE NAVY  
(DT8100, DT8102, DT8103  
& DT8104 ONLY)

HEATHERED NAVY  
(DT8100, DT8101,  
DT8102, DT8103  
& DT8104 ONLY)

MAROON HEATHER  
(DT8100, DT8101, DT8102  
& DT8103 ONLY)

ASH  
(DT8100, DT8102  
& DT8103 ONLY)



**DIST  
RICT®**







# Be you. Every day.

## DISTRICT® V.I.T.™ FLEECE

- 8.3-ounce, 65/35 ring spun cotton/ polyester
- 100% ring spun cotton face (Solids, Grey Frost, Light Heather Grey)
- 60/40 ring spun cotton/ polyester (Heathers and Frosts)
- Jersey-lined, two-piece hood
- Dyed-to-match drawcords with aluminum grommets
- Dyed-to-match twill back neck tape
- Side seamed
- 1x1 rib knit cuffs and hem
- Tear-away label

## V.I.T.™ FLEECE HOODIE

**DT6100**

ADULT SIZES: XS-4XL

## V.I.T.™ FLEECE FULL-ZIP HOODIE

**DT6102**

- Covered YKK aluminum zipper

ADULT SIZES: XS-4XL



WHITE	WHITE SMOKE (DT6100 ONLY)	BLACK	CHARCOAL	HEATHERED CHARCOAL	LIGHT HEATHER GREY
GREY FROST (DT6100 ONLY)	DEEP ROYAL	NEPTUNE BLUE (DT6100 ONLY)	ROYAL FROST	FLINT BLUE HEATHER (DT6100 ONLY)	EUCALYPTUS BLUE (DT6100 ONLY)
ICE BLUE	NEW NAVY	HEATHERED NAVY	CLASSIC RED	HEATHERED CARDINAL (DT6100 ONLY)	FIERY RED (DT6100 ONLY)
HEATHERED RUSSET (DT6100 ONLY)	GARDENIA (DT6100 ONLY)	FOREST GREEN	HEATHERED OLIVE	OLIVE (DT6100 ONLY)	HEATHERED KELLY GREEN (DT6100 ONLY)
HEATHERED DUSTY SAGE (DT6100 ONLY)	HEATHERED PURPLE (DT6100 ONLY)	DUCK BROWN (DT6100 ONLY)	OATMEAL HEATHER	LIGHT YELLOW (DT6100 ONLY)	MARIGOLD HEATHER (DT6100 ONLY)
PLUM	DESERT ROSE (DT6100 ONLY)	ROSEWATER PINK (DT6100 ONLY)	DARK FUCHSIA (DT6100 ONLY)	DESERT TAN (DT6100 ONLY)	ELECTRIC PURPLE (DT6100 ONLY)





## DISTRICT® V.I.T.™ FLEECE CREW DT6104

- 8.3-ounce, 65/35 ring spun cotton/polyester
  - 100% ring spun cotton face (Solids, Grey Frost, Light Heather Grey)
  - 60/40 ring spun cotton/polyester (Heathers and Royal Frost)
  - Dyed-to-match twill back neck tape
  - Side seamed
  - 1x1 rib knit neck, cuffs and hem
  - Tear-away label
- ADULT SIZES: XS-4XL

## DISTRICT® V.I.T.™ FLEECE 1/4-ZIP DT6106

- 8.3-ounce, 65/35 ring spun cotton/polyester
  - 100% ring spun cotton face (Solids, Light Heather Grey)
  - 60/40 ring spun cotton/polyester (Heathered Charcoal)
  - Dyed-to-match twill back neck tape
  - YKK Vislon® dyed-to-match zipper
  - Side seamed
  - 1x1 rib knit cuffs and hem
  - Front pouch pocket
  - Tear-away label
- ADULT SIZES: XS-4XL

## DISTRICT® WOMEN'S V.I.T.™ FLEECE HOODIE DT6101

- 8.3-ounce, 65/35 ring spun cotton/polyester
  - 100% ring spun cotton face (Solids, Light Heather Grey)
  - 60/40 ring spun cotton/polyester (Heathers)
  - Drop shoulder
  - Self-fabric lined hood
  - Dyed-to-match drawcords with stitched buttonholes
  - Shoulder to shoulder back neck tape
  - Side seamed
  - 1x1 rib knit cuffs and hem
  - Modest crop
  - Tear-away label
- WOMEN'S SIZES: XS-4XL

## DISTRICT® WOMEN'S V.I.T.™ FLEECE FULL-ZIP HOODIE DT6103

- 8.3-ounce, 65/35 ring spun cotton/polyester
  - 100% ring spun cotton face (Solids, Light Heather Grey)
  - 60/40 ring spun cotton/polyester (Heathers)
  - Self-fabric lined hood
  - Dyed-to-match drawcords with stitched buttonholes
  - Dyed-to-match twill back neck tape
  - Covered YKK aluminum zipper
  - Side seamed
  - 1x1 rib knit cuffs and hem
  - Tear-away label
- WOMEN'S SIZES: XS-4XL

BLACK	CHARCOAL (DT6104 & DT6106 ONLY)	HEATHERED CHARCOAL	LIGHT HEATHER GREY	DEEP ROYAL (DT6104, DT6106 & DT6101 ONLY)	ROYAL FROST (DT6104 ONLY)	WHITE (DT6104 & DT6101 ONLY)
ICE BLUE (DT6104 ONLY)	OATMEAL HEATHER (DT6104 ONLY)	NEW NAVY	HEATHERED NAVY (DT6104 ONLY)	CLASSIC RED (DT6104 ONLY)	HEATHERED CARDINAL (DT6104 ONLY)	DESERT TAN (DT6104 ONLY)
ROSEWATER PINK (DT6104 & DT6101 ONLY)	PLUM (DT6104 ONLY)	FOREST GREEN (DT6104 ONLY)	HEATHERED OLIVE (DT6104 ONLY)	NEPTUNE BLUE (DT6104 ONLY)	GREY FROST (DT6104 ONLY)	DUCK BROWN (DT6104 ONLY)
DESERT ROSE (DT6101 & DT6103 ONLY)	FLINT BLUE HEATHER (DT6101 & DT6103 ONLY)	GARDENIA (DT6101 ONLY)	EUCALYPTUS BLUE (DT6101 ONLY)	WISTERIA (DT6101 ONLY)		





**DISTRICT® YOUTH V.I.T.™ FLEECE HOODIE  
DT6100Y**

- 8.3-ounce, 65/35 ring spun cotton/polyester
  - 100% ring spun cotton face (Solids, Light Heather Grey)
  - 60/40 ring spun cotton/polyester (Royal Frost, Heathered Charcoal)
  - Jersey-lined, two-piece hood
  - Dyed-to-match twill back neck tape
  - No drawcord
  - Side seamed
  - 1x1 rib knit cuffs and hem
  - Tear-away label
- YOUTH SIZES: XS-XL



**DISTRICT® YOUTH V.I.T.™ FLEECE CREW  
DT6104Y**

- 8.3-ounce, 65/35 ring spun cotton/polyester
  - 100% ring spun cotton face (Solids, Light Heather Grey)
  - 60/40 ring spun cotton/polyester (Royal Frost, Heathered Charcoal)
  - Dyed-to-match twill neck tape
  - 1x1 rib knit collar, cuffs and hem
  - Side seamed
  - Tear-away label
- YOUTH SIZES: XS-XL

**DISTRICT® V.I.T.™ FLEECE**

- 8.3-ounce, 65/35 ring spun cotton/polyester
- 100% ring spun cotton face (Solids, Light Heather Grey)
- 60/40 ring spun cotton/polyester (Royal Frost, Heathered Charcoal)

**DISTRICT® YOUTH V.I.T.™ FLEECE FULL-ZIP HOODIE  
DT6102Y**

- Jersey-lined, two-piece hood
- Dyed-to-match twill neck tape
- 1x1 rib knit cuffs and hem
- No drawcord
- Covered YKK aluminum zipper
- Side seamed
- Tear-away label

YOUTH SIZES: XS-XL

**DISTRICT® YOUTH V.I.T.™ FLEECE SWEATPANT  
DT6112Y**

- Dyed-to-match jersey-lined pockets
  - Self-fabric waistband and cuffs with elastic
  - No drawcord
  - Side seamed
  - Tear-away label
- YOUTH SIZES: XS-XL

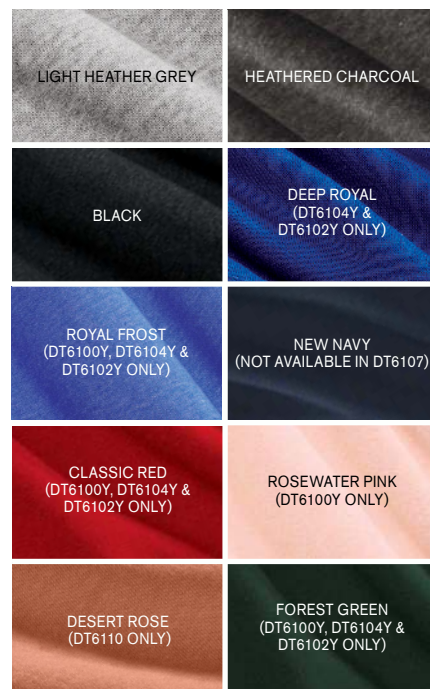


**DISTRICT® V.I.T.™ FLEECE JOGGER  
DT6107**

- 8.3-ounce, 65/35 ring spun cotton/polyester
  - 100% ring spun cotton face (Solids, Light Heather Grey)
  - 60/40 ring spun cotton/polyester (Heathered Charcoal)
  - Dyed-to-match exterior drawcords
  - Dyed-to-match jersey-lined pockets
  - 1x1 rib knit waistband and cuffs
  - Side seamed
  - Tear-away label
- ADULT SIZES: XS-4XL

**DISTRICT® WOMEN'S V.I.T.™ FLEECE SWEATPANT  
DT6110**

- 8.3-ounce, 65/35 ring spun cotton/polyester
  - 100% ring spun cotton face (Solids, Light Heather Grey)
  - 60/40 ring spun cotton/polyester (Heathered Charcoal)
  - Side seamed
  - Self-fabric elastic waistband and cuffs
  - Tear-away label
- WOMEN'S SIZES: XS-4XL





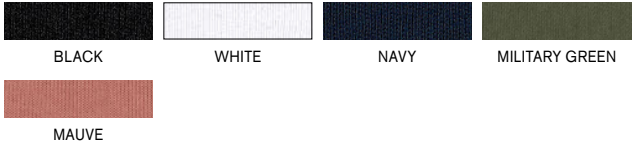


**BELLA+CANVAS® UNISEX SPONGE FLEECE DROP SHOULDER SWEATSHIRT**  
**BC3945**

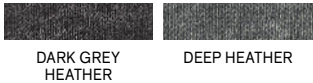
- Retail fit
- Tear-away label
- Dropped shoulders
- Side seamed
- Rib knit cuffs and hem
- 8-ounce, 52/48 Airlume combed and ring spun cotton/poly fleece, 32 singles

UNISEX SIZES: XS-2XL

**SOLID COLORS**



**HEATHER COLORS**



**BELLA+CANVAS® UNISEX SPONGE FLEECE FULL-ZIP HOODIE**  
**BC3739**

- Retail fit
- Tear-away label
- White drawcords
- Side seamed
- Kangaroo pockets
- Full-zip with white taping
- Rib knit cuffs and hem
- Solid Colors and Heather Colors: 8-ounce, 52/48 Airlume combed and ring spun cotton/poly fleece, 32 singles

UNISEX SIZES: XS-2XL

**SOLID COLORS**



**HEATHER COLORS**



\* 90/10 Airlume combed and ring spun cotton/poly \*\* 60/40 Airlume combed and ring spun cotton/poly \*\*\* 85/15 Airlume combed and ring spun cotton/poly



**BELLA+CANVAS® UNISEX SPONGE FLEECE RAGLAN SWEATSHIRT**  
**BC3901**

- Retail fit
- Tear-away label
- Raglan sleeves
- Side seamed
- Rib knit cuffs and hem
- Solid Colors and Heather Colors: 8-ounce, 52/48 Airlume combed and ring spun cotton/poly fleece, 32 singles
- Triblend Colors: 8-ounce, 50/37.5/12.5 poly/Airlume combed and ring spun cotton/ rayon, 32 singles
- Heather Colors: 8-ounce, 52/48 Airlume combed and ring spun cotton/poly fleece, 32 singles

UNISEX SIZES: XS-2XL

**SOLID COLORS    TRIBLEND COLORS**



**HEATHER COLORS**



\* 85/15 Airlume combed and ring spun cotton/poly  
\*\* 90/10 Airlume combed and ring spun cotton/poly  
\*\*\* 60/40 Airlume combed and ring spun cotton/poly



**BELLA+CANVAS® UNISEX SPONGE FLEECE PULLOVER HOODIE**  
**BC3719**

- Retail fit
- Tear-away label
- White drawcords
- Side seamed
- Kangaroo pockets
- Rib knit cuffs and hem
- Solid Colors and Heather Colors: 8-ounce, 52/48 Airlume combed and ring spun cotton/poly fleece, 32 singles
- DTG Colors: 8-ounce, 70/30 Airlume combed and ring spun cotton/poly fleece with 100% cotton face for printability

UNISEX SIZES: XS- 3XL

**SOLID COLORS**

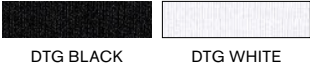


**HEATHER COLORS**



\* 85/15 Airlume combed and ring spun cotton/poly \*\* 90/10 Airlume combed and ring spun cotton/poly \*\*\* 60/40 Airlume combed and ring spun cotton/poly

**DTG COLORS**







### CHAMPION® POWERBLEND® CREWNECK SWEATSHIRT

**S6000**

- 50/40/10 cotton/poly/black poly (Light Steel)
- 50/48/2 cotton/poly/black poly (Silver Grey)
- 1x1 rib knit sleeve cuffs and hem
- Embroidered Champion "C" logo at left cuff
- Woven back neck label

ADULT SIZES: S-3XL



### CHAMPION® POWERBLEND® FULL-ZIP HOODIE

**S800**

- 50/40/10 cotton/poly/black poly (Light Steel)
- 50/48/2 cotton/poly/black poly (Silver Grey)
- Two-ply hood with dyed-to-match drawcords
- Covered placket
- 1x1 rib knit sleeve cuffs and hem
- Front pouch pocket
- Embroidered Champion "C" logo at left cuff
- Woven back neck label

ADULT SIZES: S-3XL

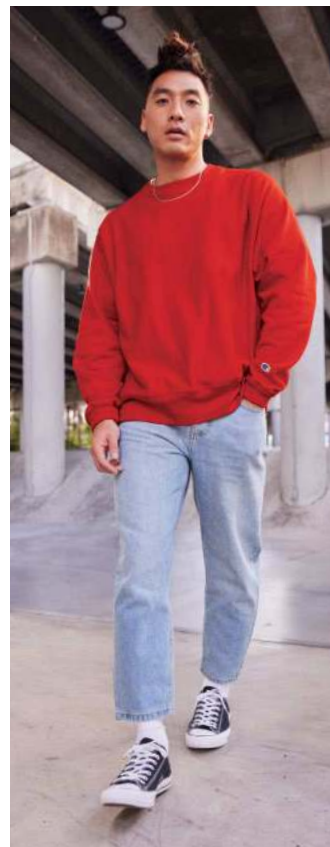


### CHAMPION® POWERBLEND® PULLOVER HOODIE

**S700**

- 9-ounce, 50/50 U.S. grown cotton/poly
- Two-ply hood with dyed-to-match drawcords
- 1x1 rib knit sleeve cuffs and hem
- Front pouch pocket
- Embroidered Champion "C" logo at left cuff
- Woven back neck label

ADULT SIZES: S-3XL

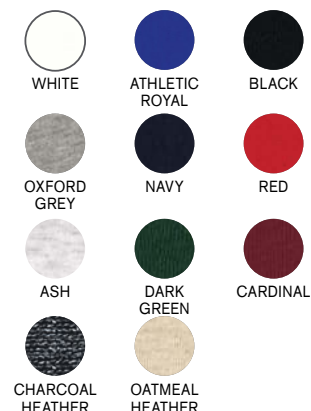


### CHAMPION® REVERSE WEAVE® CREWNECK SWEATSHIRT

**S149**

- 12-ounce, 82/18 U.S. grown cotton/poly fleece
- 77/23 cotton/poly (Oxford Grey)
- 66/34 cotton/poly (Charcoal Heather)
- Reverse Weave cross-grain cut resists shrinkage
- 1x1 rib knit neck, side panels, sleeve cuffs and hem
- Embroidered Champion "C" logo at left cuff
- Woven back neck label

ADULT SIZES: S-4XL



### CHAMPION® REVERSE WEAVE® HOODED SWEATSHIRT

**S101**

- 12-ounce, 82/18 U.S. grown cotton/poly fleece
- 77/23 cotton/poly (Oxford Grey)
- 66/34 cotton/poly (Charcoal Heather)
- 82/18 cotton/poly (Ash)
- Reverse Weave cross-grain cut resists shrinkage
- Two-ply hood with dyed-to-match drawcords
- 1x1 rib knit side panels, sleeve cuffs and hem
- Front pouch pocket
- Embroidered Champion "C" logo at left cuff
- Woven back neck label

ADULT SIZES: S-4XL







Stand out in the stands or wherever you go in these soft, midweight hoodies that mix classic fit with attitude.



#### NEW ERA® COMEBACK FLEECE HOODIES

- 8-ounce, 55/45 ring spun cotton polyester
- 2-panel hood
- Coverstitching at hood, cuffs and hem
- Embroidered New Era flag at left pocket
- Rib knit cuffs and hem

#### COMEBACK FLEECE FULL-ZIP HOODIE NEA551

- Dyed-to-match drawcords and brushed nickel metal eyelets
  - Brushed nickel metal zipper and pull
  - Front pockets
- ADULT SIZES: XS-4XL

#### WOMEN'S COMEBACK FLEECE PULLOVER HOODIE LNEA550

- Slight drop shoulders
- Front pouch pocket
- Hits at high hip

WOMEN'S SIZES: XS-4XL

#### COMEBACK FLEECE PULLOVER HOODIE NEA550

- Dyed-to-match drawcords and brushed nickel metal eyelets
- Front pouch pocket
- The NEA550 is also available with striped rib knit cuffs and hem. Choose from: *True Navy/ Athletic Heather (shown)*, *Black/Athletic Heather*, *Athletic Heather/Dark Heather Grey*

ADULT SIZES: XS-4XL





### NEW ERA® TRI-BLEND FLEECE FULL-ZIP HOODIES

- 7.1-ounce, 55/34/11 cotton/poly/ rayon fleece
- Coverstitched seams
- 3-panel hood
- Heat transfer label for tag-free comfort
- Embossed New Era neck and shoulder taping
- Matte black grommets
- Hand-dipped, silicone-tipped drawcords
- Zip-through neck
- Exposed Vislon® zipper
- Matte black zipper pull debossed with New Era flag logo
- Rolled-forward shoulders
- Front pouch pockets
- Debossed silicone New Era flag logo on left pocket
- Rib knit cuffs and hem

### TRI-BLEND FLEECE FULL-ZIP HOODIE NEA511

ADULT SIZES: XS-4XL

### WOMEN'S TRI-BLEND FLEECE FULL-ZIP HOODIE LNEA511

- Thumbholes
  - Wide rib knit hem
- WOMEN'S SIZES: XS-4XL



### NEW ERA® TRI-BLEND FLEECE PULLOVER HOODIES

- 7.1-ounce, 55/34/11 cotton/poly/rayon fleece
- Coverstitched seams
- 3-panel hood
- Heat transfer label for tag-free comfort
- Embossed New Era neck and shoulder taping
- Matte black grommets
- Hand-dipped, silicone-tipped drawcords
- Front pouch pocket
- Debossed silicone New Era flag logo on pocket
- Rib knit cuffs and hem

### WOMEN'S TRI-BLEND FLEECE PULLOVER HOODIE LNEA510

- Cowl neck
  - Raglan sleeves
  - Rib knit pocket detail
  - Thumbholes
  - Longer length
  - Curved drop tail hem
- WOMEN'S SIZES: XS-4XL

### TRI-BLEND FLEECE PULLOVER HOODIE NEA510

- Crossover neck
  - Rolled-forward shoulders
- ADULT SIZES: XS-4XL





**SPORT-TEK®**

# 9-OUNCE SWEATSHIRTS

**ST254 ADULT | TST254 TALL | LST254 WOMEN'S**



BLACK

GRAPHITE  
HEATHER

VINTAGE  
HEATHER

ATHLETIC HEATHER  
(NOT AVAILABLE IN  
LST254)

MAROON  
(ST254 ONLY)



TRUE NAVY



TRUE ROYAL  
(NOT AVAILABLE  
IN LST254)



TRUE RED  
(ST254 ONLY)



FOREST GREEN  
(ST254 ONLY)

**YST254 YOUTH**



BLACK

GRAPHITE  
HEATHER

VINTAGE  
HEATHER

TRUE RED

TRUE NAVY

TRUE ROYAL

**ST253 ADULT | TST253 TALL**



BLACK

WHITE  
(ST253 ONLY)

GRAPHITE  
HEATHER

VINTAGE  
HEATHER

ATHLETIC  
HEATHER  
(ST253 ONLY)

FOREST  
GREEN  
(ST253 ONLY)

TRUE RED  
(ST253 ONLY)

MAROON  
(ST253 ONLY)

TRUE NAVY

TRUE ROYAL

**LST253 WOMEN'S**



BLACK

WHITE

GRAPHITE  
HEATHER

VINTAGE  
HEATHER

ATHLETIC  
HEATHER

TRUE RED

TRUE  
NAVY

TRUE  
ROYAL



## SPORT-TEK® PULLOVER HOODED SWEATSHIRTS

- 9-ounce, 65/35 ring spun combed cotton/poly fleece
- Twill-taped neck
- 2x2 rib knit cuffs and hem with spandex
- Front pouch pocket

## PULLOVER HOODED SWEATSHIRTS

**ST254 Colors**

*Heathers*

- Dyed-to-match drawcords

ADULT SIZES: XS–4XL

**TALL SIZES** LT–4XLT (**TST254**)

*Colors*

*Heathers*

## WOMEN'S PULLOVER HOODED SWEATSHIRT

**LST254 Colors**

*Heathers*

- Dyed-to-match drawcords

WOMEN'S SIZES: XS–4XL

## YOUTH PULLOVER HOODED SWEATSHIRT

**YST254 Colors**

*Heathers*

- No drawcords at hood

YOUTH SIZES: XS–XL

## SPORT-TEK® 1/4-ZIP SWEATSHIRTS

- 9-ounce, 65/35 ring spun combed cotton/poly fleece
- Twill-taped neck
- 2x2 rib knit cuffs with spandex

## 1/4-ZIP SWEATSHIRTS

**ST253 Colors**

*Heathers*

- 2x2 rib knit hem with spandex

ADULT SIZES: XS–4XL

**TALL SIZES** LT–4XLT (**TST253**)

*Colors*

*Heathers*

## WOMEN'S 1/4-ZIP SWEATSHIRT

**LST253 Colors**

*Heathers*

- 2x2 rib knit collar with spandex
- Open hem

WOMEN'S SIZES: XS–4XL



# 12-OUNCE SWEATSHIRTS

## SPORT-TEK® SUPER HEAVYWEIGHT SWEATSHIRTS

- 12-ounce, cross-grain 80/20 ring spun combed cotton/poly fleece
- 100% ring spun combed cotton face
- Twill-taped neck
- 2x2 rib knit cuffs, hem and side gussets with spandex

## SUPER HEAVYWEIGHT CREWNECK SWEATSHIRT F280 Colors

Heathers

- 2x2 rib knit crewneck

ADULT SIZES: XS-4XL

## SUPER HEAVYWEIGHT PULLOVER HOODED SWEATSHIRT F281 Colors

Heathers

- Self-fabric hood lining
- Dyed-to-match drawcords
- Front pouch pocket

ADULT SIZES: XS-4XL

## SUPER HEAVYWEIGHT FULL-ZIP HOODED SWEATSHIRT F282 Colors

Heathers

- Self-fabric hood lining
- Dyed-to-match drawcords
- Antique nickel-finished zipper
- Front pouch pockets

ADULT SIZES: XS-4XL

## SUPER HEAVYWEIGHT 1/4-ZIP PULLOVER SWEATSHIRT ST283 Colors

Heathers

### CADET COLLAR

- Antique nickel-finished zipper

ADULT SIZES: XS-4XL

### F280 ADULT



BLACK

GRAPHITE  
HEATHER

ATHLETIC  
HEATHER

TRUE NAVY

### F281 ADULT



BLACK

GRAPHITE  
HEATHER

ATHLETIC  
HEATHER

DARK GREEN

ORANGE

### F282 ADULT



BLACK

GRAPHITE  
HEATHER

ATHLETIC  
HEATHER

DARK GREEN



RED

TRUE NAVY

ROYAL

### ST283 ADULT



BLACK

GRAPHITE  
HEATHER

ATHLETIC  
HEATHER

TRUE NAVY

RED

MAROON

BROWN

TRUE NAVY

ROYAL




**LST850 WOMEN'S**

**ST850 ADULT | TST850 TALL**

**SPORT-TEK®  
SPORT-WICK® STRETCH  
1/4-ZIP PULLOVERS**

- 6.8-ounce, 90/10 poly/spandex jersey
- Smooth-faced
- Soft-brushed backing
- Cadet collar
- Taped neck
- Chin guard for additional comfort
- Raglan sleeves
- Open cuffs and hem

**SPORT-WICK® STRETCH  
1/4-ZIP PULLOVERS  
ST850**

ADULT SIZES: XS – 4XL

**TALL SIZES** LT – 4XLT  
(TST850)

**WOMEN'S SPORT-WICK®  
STRETCH 1/4-ZIP PULLOVER  
LST850**

- Thumbholes to keep hands warm
- Front pouch pocket

WOMEN'S SIZES: XS – 4XL



# SPORT-WICK STRETCH

## ST853 ADULT



BLACK/  
CHARCOAL GREY

BLACK/  
TRUE RED

BLACK/  
TRUE ROYAL

CHARCOAL  
GREY HEATHER/  
CHARCOAL  
GREY

CHARCOAL  
GREY HEATHER/  
CHARGE  
GREEN

CHARCOAL  
GREY  
HEATHER/  
TRUE NAVY

## LST853 WOMEN'S



BLACK/  
CHARCOAL  
GREY

BLACK/  
TRUE RED

BLACK/  
TRUE ROYAL

CHARCOAL  
GREY  
HEATHER/  
CHARCOAL  
GREY

CHARCOAL  
GREY  
HEATHER/  
CHARGE  
GREEN

CHARCOAL  
GREY  
HEATHER/  
TRUE NAVY

CHARCOAL  
GREY  
HEATHER/  
PINK RUSH

CHARCOAL  
GREY  
HEATHER/  
HOT CORAL



MOISTURE-  
WICKING



STRETCH



TAG-FREE

### SPORT-TEK® SPORT-WICK® STRETCH CONTRAST FULL-ZIP JACKETS

- 6.8-ounce, 90/10 poly/spandex jersey
- Soft-brushed backing
- Cadet collar with contrast piping
- Taped neck
- Contrast reverse coil zipper
- Set-in sleeves
- Contrast cuff binding

### SPORT-WICK® STRETCH CONTRAST FULL-ZIP JACKET

**ST853**

- Contrast welt front pockets

ADULT SIZES: XS-4XL

### WOMEN'S SPORT-WICK® STRETCH CONTRAST FULL-ZIP JACKET

**LST853**

- Thumbholes to keep hands warm
- Contrast trim at front pockets and thumbholes

WOMEN'S SIZES: XS-4XL

**NEW!**

### SPORT-TEK® SPORT-WICK® STRETCH FULL-ZIP CADET JACKETS

- 6.8-ounce, 90/10 poly/spandex
- Moisture-wicking

### SPORT-WICK® STRETCH FULL-ZIP CADET JACKET

**ST857**

ADULT SIZES: XS-4XL

### WOMEN'S SPORT-WICK® STRETCH FULL-ZIP CADET JACKET

**LST857**

WOMEN'S SIZES: XS-4XL



FLEECE/SWEATSHIRTS



## ST857 ADULT



CHARCOAL  
GRAY  
HEATHER

CHARCOAL  
GRAY

BLACK

TRUE NAVY

TRUE ROYAL

DEEP RED

## LST857 WOMEN'S



CHARCOAL  
GRAY  
HEATHER

CHARCOAL  
GRAY

BLACK

TRUE NAVY

TRUE ROYAL

DEEP RED



**SPORT-TEK®**

# SPORT-WICK FLEECE



TAG-FREE



MOISTURE-  
WICKING

## F244 ADULT | YST244 YOUTH



BLACK



WHITE  
(F244 ONLY)



**NEW!**  
SILVER  
(F244 ONLY)



DARK SMOKE  
GREY



FOREST  
GREEN  
(F244 ONLY)



KELLY  
GREEN  
(F244 ONLY)



COYOTE  
BROWN  
(F244 ONLY)



OLIVE DRAB  
GREEN  
(F244 ONLY)



WOODLAND  
BROWN  
(F244 ONLY)



DEEP  
ORANGE  
(F244 ONLY)



DEEP  
RED



MAROON  
(F244 ONLY)



NAVY



TRUE ROYAL

## ST251 ADULT | YST251 YOUTH



BLACK



WHITE



DARK SMOKE  
GREY



DEEP RED



NAVY



TRUE ROYAL

### SPORT-TEK® SPORT-WICK® FLEECE HOODED PULLOVERS

- 5.5-ounce, 100% polyester
- Anti-static
- Three-panel hood
- Self-fabric hood lining
- Taped neck
- Self-fabric cuffs and hem
- Front pouch pocket

### SPORT-WICK® FLEECE HOODED PULLOVER

**F244**

- Dyed-to-match drawcords with metal tips

ADULT SIZES: XS-4XL

### **YOUTH** SPORT-WICK® FLEECE HOODED PULLOVER YST244

- No drawcords at hood

YOUTH SIZES: XS-XL

### SPORT-TEK® SPORT-WICK® FLEECE SHORT SLEEVE HOODED PULLOVERS

- 5.5-ounce, 100% polyester
- Anti-static
- Three-panel hood
- Taped neck
- Self-fabric hem
- Front pouch pocket

### SPORT-WICK® FLEECE SHORT SLEEVE HOODED PULLOVER ST251

- Dyed-to-match drawcords

ADULT SIZES: XS-4XL

### **YOUTH** SPORT-WICK® FLEECE SHORT SLEEVE HOODED PULLOVER YST251

- No drawcords at hood

YOUTH SIZES: XS-XL

### SPORT-TEK® SPORT-WICK® FLEECE JOGGER

**ST233**

- 5.5-ounce, 100% polyester
- Anti-static
- Elastic waistband with exterior dyed-to-match drawcord
- Front pockets
- Self-fabric cuffs

ADULT SIZES: XS-4XL

### ST233 ADULT



BLACK

DARK SMOKE  
GREY



**SPORT-TEK® SPORT-WICK® FLEECE FULL-ZIP JACKETS**

- 5.5-ounce, 100% polyester
- Anti-static
- Cadet collar
- Taped neck
- Slash pockets
- Self-fabric cuffs and hem

**SPORT-WICK® FLEECE FULL-ZIP JACKET ST241**

ADULT SIZES: XS-4XL

**WOMEN'S SPORT-WICK® FLEECE FULL-ZIP JACKET LST241**

WOMEN'S SIZES: XS-4XL

**YOUTH SPORT-WICK® FLEECE FULL-ZIP JACKET YST241**

YOUTH SIZES: XS-XL

**ST241 ADULT | YST241 YOUTH**

BLACK

WHITE

SILVER  
(ST241 ONLY)DARK SMOKE  
GREY

DEEP RED

NAVY

TRUE ROYAL

**LST241 WOMEN'S**

BLACK

WHITE

SILVER

DARK SMOKE  
GREY

DEEP RED

NAVY

TRUE ROYAL

**SPORT-TEK® SPORT-WICK® FLEECE PANTS**

- 5.5-ounce, 100% polyester
- Anti-static
- Front slash pockets
- Open hem cuffs

**SPORT-WICK® FLEECE PANT ST237**

- Elastic waistband with drawcord

ADULT SIZES: XS-4XL

**YOUTH SPORT-WICK® FLEECE PANT YST237**

- Elastic waistband
- No drawcord

YOUTH SIZES: XS-XL

**ST237 ADULT | YST237 YOUTH**

BLACK

**ST235 ADULT | YST235 YOUTH****SPORT-TEK® SPORT-WICK® FLEECE COLORBLOCK HOODED PULLOVERS**

- 5.5-ounce, 100% polyester
- Anti-static
- Three-panel hood
- Contrast self-fabric hood lining
- Taped neck
- Self-fabric cuffs and hem
- Front pouch pocket

**SPORT-WICK® FLEECE COLORBLOCK HOODED PULLOVER ST235**

- Contrast drawcords with metal tips

ADULT SIZES: XS-4XL

**YOUTH SPORT-WICK® FLEECE COLORBLOCK HOODED PULLOVER YST235**

- No drawcords at hood

YOUTH SIZES: XS-XL

BLACK/DARK  
SMOKE GREYBLACK/GOLD  
(ST235 ONLY)BLACK/  
DEEP ORANGE  
(ST235 ONLY)BLACK/  
DEEP REDNEON PINK/  
BLACK  
(YST235 ONLY)BLACK/  
TRUE ROYALDARK SMOKE  
GREY/LIME  
SHOCKDARK SMOKE  
GREY/NAVY



# CORE FLEECE

**7.8  
oz**

- 50/50 COTTON/POLY FLEECE
- AIR JET YARN FOR SOFTNESS



## PORT & COMPANY® CORE FLEECE SWEATSHIRTS

- 7.8-ounce, 50/50 cotton/poly fleece
- Air jet yarn for softness
- Removable tag for comfort and relabeling

### CORE FLEECE CREWNECK SWEATSHIRT

**PC78** *Neutrals*

*Colors/Heathers*

- 1x1 rib knit collar, cuffs and hem

ADULT SIZES: S-4XL

### YOUTH CORE FLEECE CREWNECK SWEATSHIRT

**PC90Y** *Neutrals*

*Colors/Heathers*

- 1x1 rib knit collar, cuffs and hem

YOUTH SIZES: XS-XL

### CORE FLEECE PULLOVER HOODED SWEATSHIRTS

**PC78H** *Neutrals*

*Colors/Heathers*

- Two-ply hood with dyed-to-match drawcords
- Front pouch pocket

ADULT SIZES: S-4XL

**TALL SIZES** LT-4XLT (**PC78HT**)

*Neutrals*

*Colors/Heathers*

## WOMEN'S CORE FLEECE PULLOVER HOODED SWEATSHIRT

**LPC78H** *Neutrals*

*Colors/Heathers*

- Two-ply hood with dyed-to-match drawcords
- Front pouch pocket
- 3-inch rib knit cuffs and hem

WOMEN'S SIZES: XS-4XL

## YOUTH CORE FLEECE PULLOVER HOODED SWEATSHIRT

**PC90YH**

- No drawcord at two-ply hood

- Front pouch pocket

YOUTH SIZES: XS-XL

## CORE FLEECE CAMO PULLOVER HOODED SWEATSHIRT

**PC78HC**

- Front pouch pocket

ADULT SIZES: S-4XL

## CORE FLEECE CADET FULL-ZIP SWEATSHIRT

**PC78FZ**

- Dyed-to-match YKK zipper

- Front pockets

ADULT SIZES: S-4XL

## CORE FLEECE 1/4-ZIP PULLOVER SWEATSHIRT

**PC78Q**

- Dyed-to-match YKK zipper

ADULT SIZES: S-4XL

## CORE FLEECE 1/4-ZIP PULLOVER SWEATSHIRT

**PC78YQ**

- Dyed-to-match YKK zipper

ADULT SIZES: XS-XL

## TODDLER CORE FLEECE PULLOVER HOODED SWEATSHIRT

**CAR78TH**

- Satin label

- No drawcord at jersey-lined hood

- Front pouch pocket

TODDLER SIZES: 2T, 3T, 4T

(NOT SHOWN)

	PC78HC ADULT	PC78HC ADULT
MILITARY CAMO		HEATHER NAVY CAMO
DESERT CAMO		BLACK HEATHER CAMO
RED CAMO		WINTER CAMO
WOODLAND BLUE CAMO		PINK CAMO



	PC78 ADULT	PC90Y YOUTH	PC78H ADULT	LPC78H WOMEN'S	PC90YH YOUTH	PC78FZ ADULT	PC78Q ADULT	PC78YQ YOUTH	CAR78TH TODDLER		PC78 ADULT	PC90Y YOUTH	PC78H ADULT	LPC78H WOMEN'S	PC90YH YOUTH	PC78FZ ADULT	PC78Q ADULT	PC78YQ YOUTH	CAR78TH TODDLER
NEUTRALS	WHITE									WOODLAND BROWN			A						
	ASH			A						OLIVE DRAB GREEN			A						
HEATHERS	ATHLETIC HEATHER									DARK CHOCOLATE BROWN			A						
	SILVER			A						OLIVE			A						
	PALE BLUSH			A						CLOVER GREEN			A						
	CANDY PINK			A						KELLY			A						
	NATURAL			A						DARK GREEN			A						
	OATMEAL HEATHER			A						CAROLINA BLUE			A						
	CREME			A						SAPPHIRE			A						
	YELLOW			A						TEAL			A						
	SAND			A						HEATHER ROYAL			A						
	<b>NEW!</b> S. GREEN									TRUE ROYAL			A						
	LIME			A						ROYAL									
	LIGHT BLUE			A						STEEL BLUE			A						
	AQUATIC BLUE			A						NEPTUNE BLUE			A						
	GOLD			A						HEATHER NAVY									
	<b>NEW!</b> S. ORANGE									NAVY									
	ORANGE			A						TRUE NAVY			A						
	HEATHER RED			A						CHARCOAL									
	RED									MEDIUM GREY			A						
	CARDINAL			A						COAL GREY			A						
	HEATHER ATHLETIC MAROON			A						GRAPHITE HEATHER			A						
	MAROON			A						DARK HEATHER GREY									
	HEATHER SANGRIA			A						<b>NEW!</b> BLACK HEATHER									
	SANGRIA			A						JET BLACK									
	HEATHER PURPLE			A						NEON BLUE			A						
	TEAM PURPLE			A						NEON GREEN			A						
	PURPLE			A						NEON ORANGE			A						
	HEATHER DARK CHOCOLATE BROWN			A						NEON PINK			A						
	COYOTE BROWN			A						NEON YELLOW			A						

A=Adult sizing only, not available in Tall.



# CORE FLEECE

**7.8  
oz**

- 50/50 COTTON/POLY FLEECE
- AIR JET YARN FOR SOFTNESS



**PORT & COMPANY® CORE  
FLEECE FULL-ZIP HOODED  
SWEATSHIRTS**

- 7.8-ounce, 50/50 cotton/poly fleece
- Air jet yarn for softness
- Dyed-to-match drawcords
- YKK metal zipper
- Front pockets
- 1x1 rib knit cuffs and hem

**WOMEN'S CORE FLEECE FULL-ZIP  
HOODED SWEATSHIRT**

**LPC78ZH** *Neutrals*

*Colors*

- Jersey-lined hood
- Side seamed with a contoured body for a feminine fit

WOMEN'S SIZES: XS-4XL

**CORE FLEECE FULL-ZIP HOODED  
SWEATSHIRT**

**PC78ZH** *Neutrals*

*Colors/Heathers*

- Jersey-lined hood
- ADULT SIZES: S-4XL

**YOUTH CORE FLEECE FULL-ZIP  
HOODED SWEATSHIRT**

**PC90YZH** *Neutrals*

*Colors/Heathers*

- No drawcord at hood

YOUTH SIZES: XS-XL

**TODDLER CORE FLEECE  
FULL-ZIP HOODED SWEATSHIRT**

**CAR78TZH**

- Satin label

- No drawcord at hood

TODDLER SIZES: 2T, 3T, 4T

**INFANT CORE FLEECE FULL-ZIP  
HOODED SWEATSHIRT**

**CAR78iZH**

- Satin label

- No drawcord at hood

INFANT SIZES: 6M, 12M, 18M  
(NOT SHOWN)



TEAR  
AWAY  
LABEL

**NEW!**

## PORT & COMPANY® CORE FLEECE SWEATPANT

### PC78SP

- 7.8-ounce, 50/50 cotton/poly fleece
- Air jet yarn for softness
- Elastic, self-fabric waistband
- Dyed-to-match drawcord
- Side pockets
- Elastic cuffs
- Removable tag for comfort and relabeling

ADULT SIZES: S-4XL

## PORT & COMPANY® CORE FLEECE SWEATPANT WITH POCKETS

### PC78P *Neutrals*

*Colors/Heathers*

- 7.8-ounce, 50/50 cotton/poly fleece
- Air jet yarn for softness
- Removable tag for comfort and relabeling
- Elastic waistband with drawcord
- Open bottom cuffs

ADULT SIZES: S-4XL

## PORT & COMPANY® **YOUTH** CORE FLEECE SWEATPANT

### PC90YP

- 7.8-ounce, 50/50 cotton/poly fleece
- Air jet yarn for softness
- Elastic waistband
- No drawcord
- Elastic bottom cuffs

YOUTH SIZES: XS-XL



NEUTRALS

COLORS

	PC78ZH ADULT	LPC78ZH WOMEN'S	PC90YZH <b>YOUTH</b>	CAR78TZH TODDLER	CAR78IZH INFANT
WHITE					
ASH					
ATHLETIC HEATHER					
LIME					
ORANGE					
HEATHER RED					
RED					
MAROON					
SANGRIA					
CANDY PINK					
PURPLE					
DARK CHOCOLATE BROWN					
KELLY					
DARK GREEN					
CAROLINA BLUE					
HEATHER ROYAL					
ROYAL					
HEATHER NAVY					
NAVY					
CHARCOAL					
DARK HEATHER GREY					
JET BLACK					
NEON BLUE					
NEON GREEN					
NEON ORANGE					
NEON PINK					
NEON YELLOW					

NEUTRALS

HEATHERS

COLORS

WHITE (PC78P & PC90YP ONLY)
ASH (PC78P & PC78SP ONLY)
ATHLETIC HEATHER
RED (PC78P & PC90YP ONLY)
ROYAL (PC78P & PC90YP ONLY)
NAVY
CHARCOAL (PC78P & PC90YP ONLY)
DARK HEATHER GREY (PC78SP ONLY)
JET BLACK

FLEECE/SWEATSHIRTS



9  
oz

- ESSENTIAL 50/50 COTTON/POLY FLEECE
- HEAVYWEIGHT FLEECE
- AIR JET YARN FOR SOFTNESS

PORT & COMPANY® ESSENTIAL FLEECE SWEATSHIRTS & SWEATPANTS

- 9-ounce, 50/50 cotton/poly fleece
- Air jet yarn for softness

ESSENTIAL FLEECE FULL-ZIP HOODED SWEATSHIRTS  
PC90ZH

- Two-ply hood with dyed-to-match drawcords
- YKK metal zipper
- Front pockets

ADULT SIZES: S-4XL

**TALL SIZES** LT-4XLT (PC90ZHT)

ESSENTIAL FLEECE PULLOVER HOODED SWEATSHIRTS  
PC90H

Neutrals

Colors/Heathers

- Two-ply hood
- Dyed-to-match drawcords
- Front pouch pocket

ADULT SIZES: S-4XL

**TALL SIZES** LT-4XLT (PC90HT)

Neutrals

Colors/Heathers

ESSENTIAL FLEECE CREWNECK SWEATSHIRTS  
PC90

Neutrals

Colors/Heathers

ADULT SIZES: S-4XL

**TALL SIZES** LT-4XLT (PC90T)

	NEUTRALS			
	PC90ZH ADULT PC90ZHT TALL	PC90H ADULT PC90HT TALL	PC90 ADULT PC90T TALL	PC90P ADULT
WHITE			A	
ASH				
ATHLETIC HEATHER				
GOLD		A		
SAFETY ORANGE				
ORANGE			A	
RED	A		A	
CARDINAL		A	A	
MAROON				
DARK CHOCOLATE BROWN		A		
PURPLE		A	A	
ROYAL				
NAVY				
SAFETY GREEN				
KELLY GREEN				
DARK GREEN				
DARK HEATHER GREY		A		
CHARCOAL				
BLACK HEATHER		A		
JET BLACK				

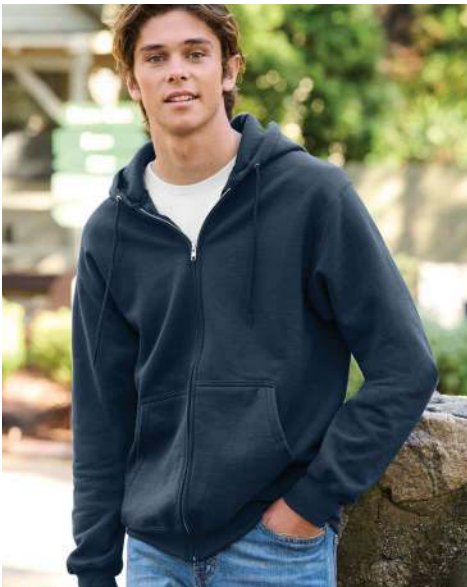
Due to the nature of 50/50 cotton/poly safety fabrics, special care must be taken throughout the printing process.

A= Adult only

ESSENTIAL FLEECE SWEATPANT WITH POCKETS  
PC90P

- Elastic waistband with drawcord
- Elastic bottom cuffs

ADULT SIZES: XS-4XL





FOREST GREEN  
(PC850, PC850ZH &  
PC850H ONLY)

CHARCOAL

WHITE  
(NOT AVAILABLE IN PC850Q)

ATHLETIC  
HEATHER\*\*

SAPPHIRE  
(PC850H ONLY)

ORANGE  
(PC850H ONLY)

BRIGHT RED

TEAM CARDINAL  
(PC850, PC850H & PC850ZH  
ONLY)

TEAM PURPLE  
(PC850H ONLY)

TRUE ROYAL

TEAM NAVY

DARK HEATHER GREY \*

JET BLACK

# RING SPUN FAN FAVORITE FLEECE

- IDEAL FOR DIRECT TO GARMENT (DTG) PRINTING
- 80/20 RING SPUN COTTON/POLY FLEECE
- 100% RING SPUN COTTON FACE (SOLIDS)
- FAN FAVORITE COLORS

8.5  
oz

FLEECE/SWEATSHIRTS



## PORT & COMPANY® FAN FAVORITE™ FLEECE

- 8.5-ounce, 80/20 ring spun cotton/poly
- 100% ring spun cotton face (except Athletic Heather and Dark Heather Grey)
- Removable tag for comfort and relabeling
- Locker patch
- Twill-taped neck

### PORT & COMPANY® FAN FAVORITE™ FLEECE CREWNECK SWEATSHIRT PC850

ADULT SIZES: XS-4XL

### PORT & COMPANY® **YOUTH** FAN FAVORITE™ FLEECE PULLOVER HOODED SWEATSHIRT PC850YH

- No drawcord at hood
  - Front pouch pocket
- YOUTH SIZES: XS-XL

### PORT & COMPANY® FAN FAVORITE™ FLEECE PULLOVER HOODED SWEATSHIRT PC850H

- Two-ply hood with dyed-to-match drawcords
  - Front pouch pocket
- ADULT SIZES: XS-4XL

### PORT & COMPANY® FAN FAVORITE™ FLEECE FULL-ZIP HOODED SWEATSHIRT PC850ZH

- Two-ply hood with dyed-to-match drawcords
  - Dyed-to-match YKK zipper
  - Front pockets
- ADULT SIZES: XS-4XL

### PORT & COMPANY® FAN FAVORITE™ 1/4-ZIP PULLOVER SWEATSHIRT PC850Q

- Cadet collar
  - Dyed-to-match YKK zipper
- ADULT SIZES: XS-4XL

\*50/50 ring spun cotton/poly  
\*\*75/25 ring spun cotton/poly



## PERFORMANCE

- AMAZING VALUE
- 100% POLYESTER PERFORMANCE FLEECE
- DRY ZONE MOISTURE-WICKING TECHNOLOGY



ROYAL  
(PC590Q, PC590H & PC590YH ONLY)

DEEP NAVY

CHARCOAL

SILVER

RED  
(PC590Q, PC590H & PC590YH ONLY)

JET BLACK

### MOISTURE WICKING

#### PORT & COMPANY® PERFORMANCE FLEECE

- 5.9 oz, 100% polyester
- Dry Zone® moisture-wicking technology
- Removable tag for comfort and relabeling
- Taped neck
- Self-fabric cuffs and hem

#### PERFORMANCE FLEECE 1/4-ZIP PULLOVER SWEATSHIRT

##### PC590Q

- Cadet collar
- Reverse coil dyed-to-match YKK zipper

#### PERFORMANCE FLEECE CREWNECK SWEATSHIRT

##### PC590

- V-stitch at neck

ADULT SIZES: S-4XL

#### YOUTH PERFORMANCE FLEECE PULLOVER HOODED SWEATSHIRT

##### PC590YH

- 3-panel hood
- No drawcords at hood
- Front pouch pocket

YOUTH SIZES: XS-XL

#### PERFORMANCE FLEECE PULLOVER HOODED SWEATSHIRT

##### PC590H

- 3-panel hood with dyed-to-match drawcords
- Front pouch pocket

ADULT SIZES: S-4XL

# BEACH WASH

8.6  
oz

- 80/20 RING SPUN COTTON/POLY FLEECE
- 100% COTTON FACE
- PERFECTLY GARMENT-DYED COLORS



#### PORT & COMPANY® BEACH WASH® GARMENT-DYED SWEATSHIRTS

- 8.6-ounce, 80/20 ring spun cotton/poly fleece
- 100% cotton face
- 2x2 rib knit cuffs and hem

#### BEACH WASH® GARMENT-DYED PULLOVER HOODED SWEATSHIRT

##### PC098H

- Jersey-lined hood with dyed-to-match flat drawcords
- Front pouch pocket

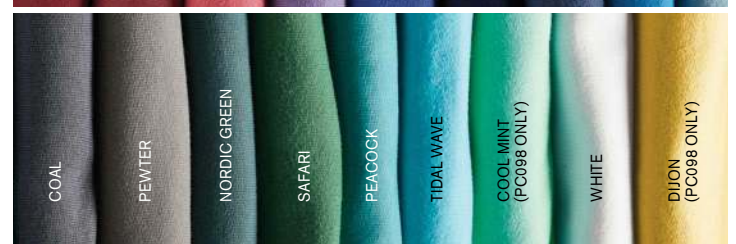
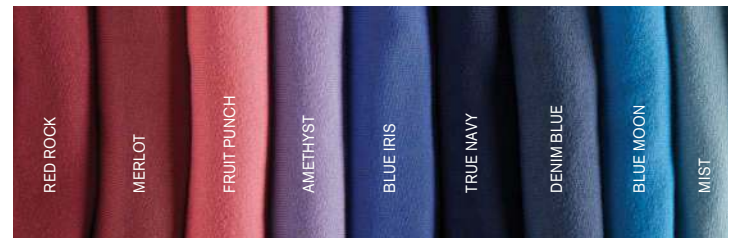
ADULT SIZES: S-4XL

#### BEACH WASH® GARMENT-DYED CREWNECK SWEATSHIRT

##### PC098

- 2x2 rib knit collar and V-inset at neck

ADULT SIZES: S-4XL



The garment-dyeing process infuses each garment with unique character. Please allow for slight color variation. Special consideration must also be taken when printing white ink on garment-dyed cotton.



# CRYSTAL TIE-DYE

- 8 VIBRANT COLORS
- INDIVIDUALLY HAND DYED
- ON-TREND TIE-DYE PATTERN
- GREAT VALUE

## PORT & COMPANY® CRYSTAL TIE-DYE PULLOVER HOODIE PC144

- 7.8-ounce, 80/20 cotton/poly fleece
  - Sewn with dyeable thread
  - Self-fabric lined hood
  - Dyed-to-match drawcords
  - Front pouch pocket
- ADULT SIZES: S-4XL



# TIE-DYE

**7.8  
oz**

- 80/20 COTTON/POLY FLEECE
- INDIVIDUALLY HAND DYED
- SEWN WITH DYEABLE THREAD

## PORT & COMPANY® TIE-DYE PULLOVER HOODED SWEATSHIRTS

- 7.8-ounce, 80/20 cotton/poly fleece
- Two-ply hood
- Front pouch pocket

### TIE-DYE PULLOVER HOODED SWEATSHIRT PC146

- Dyed-to-match drawcords
- ADULT SIZES: S-4XL

### YOUTH TIE-DYE PULLOVER HOODED SWEATSHIRT PC146Y

- No drawcord at hood
- YOUTH SIZES: XS-XL



RAINBOW

NEON RAINBOW

NEW!  
MINT RAINBOW  
(PC146 ONLY)NEW!  
ISLAND SPIRAL  
(PC146 ONLY)

PINK



PURPLE

KELLY

TURQUOISE

ROYAL

NAVY

BLACK





FULL-ZIP

GILDAN® HEAVY BLEND™ FULL-ZIP HOODED SWEATSHIRT

18600 Neutrals

Colors/Heathers

- 8-ounce, 50/50 US cotton/poly
  - Unlined hood with color-matched drawcord
  - Metal zipper
  - Front pouch pockets
  - 1x1 rib with spandex
- ADULT SIZES: S-5XL  
(Select colors up to 5XL)

NEW!  
GILDAN® YOUTH HEAVY BLEND™ FULL-ZIP HOODED SWEATSHIRT

- 18600B
- Unlined hoods with no drawcords
- YOUTH SIZES: XS-XL



CREWNECK

GILDAN® HEAVY BLEND™ CREWNECK SWEATSHIRT

18000 Neutrals

Colors/Heathers

- 8-ounce, 50/50 US cotton/poly
- ADULT SIZES: S-5XL  
(Select colors up to 5XL)

GILDAN® YOUTH HEAVY BLEND™ CREWNECK SWEATSHIRT

18000B Neutrals

Colors/Heathers

- YOUTH SIZES: XS-XL



GILDAN®  
Heavy Blend™

PULLOVER

8  
oz

GILDAN® HEAVY BLEND™ PULLOVER HOODED SWEATSHIRT

18500 Neutrals

Colors/Heathers

- 8-ounce, 50/50 US cotton/poly
  - Dyed-to-match drawcord
- ADULT SIZES: S-5XL  
(Select colors up to 5XL)

GILDAN® YOUTH HEAVY BLEND™ PULLOVER HOODED SWEATSHIRT

18500B

- No drawcord at hood
- YOUTH SIZES: XS-XL



GILDAN®  
DryBlend®

PULLOVER

9  
oz

GILDAN® DRYBLEND® PULLOVER HOODED SWEATSHIRT

12500 Neutrals

Colors/Heathers

- 9-ounce, 50/50 US cotton/poly
  - Double-lined hood with color matched drawcords
  - Front pouch pocket
  - 1x1 rib with spandex
  - Moisture-wicking properties
  - Tearaway label
- ADULT SIZES: S-3XL

	18600 ADULT	18600B YOUTH	18000 ADULT	18000B YOUTH	18500 ADULT	18500B YOUTH	12500 ADULT
NEUTRALS							
WHITE							3XL
BLACK	5XL						3XL
ASH							2XL
SPORT GREY	5XL						3XL
HEATHERS							
DARK HEATHER GREY							
GRAPHITE HEATHER							
CHARCOAL							3XL
GOLD							
ORANGE							
S. ORANGE							3XL
SAND							
COLORS							
DARK CHOCOLATE							
RED	5XL						3XL
ANTIQUE CHERRY RED							
CHERRY RED							
CARDINAL RED			3XL				
HEATHER SPORT SCARLET			3XL				
GARNET							

	18600 ADULT	18600B YOUTH	18000 ADULT	18000B YOUTH	18500 ADULT	18500B YOUTH	12500 ADULT
COLORS							
MAROON							2XL
LIGHT PINK							
SAFETY PINK					3XL		
HELICONIA							
PURPLE							
ANTIQUE SAPPHIRE							
INDIGO BLUE							
LIGHT BLUE							
CAROLINA BLUE							
HEATHER SPORT ROYAL			3XL		3XL		
ROYAL	5XL						3XL
HEATHER SPORT DARK NAVY			3XL		3XL		
NAVY	5XL						3XL
MILITARY GREEN							
FOREST GREEN							2XL
IRISH GREEN							
SAFETY GREEN	3XL						3XL

Safety Green is compliant with ANSI/ISEA 107 high-visibility standards